



SECURICO CCTV

Securico CCTV System

Adjust the Time on a Hikvision DVR / NVR - User Manual

Version 1.0

May 2019

Adjust the Time on Hikvision DVR / NVR

User Manual

COPYRIGHT © 2019 Securico CCTV

ALL RIGHTS RESERVED.

About this Manual

This manual is applicable to Securico CCTV Systems using Hikvision hardware and software.

The manual includes instructions for using and managing the product. Pictures, charts, images and all other information hereinafter are for description and explanation only. The information contained in the Manual is subject to change, without notice, due to firmware updates or other reasons.

Please use this user manual under the guidance of professionals.

Trademarks Acknowledgement and other Hikvision's trademarks and logos are the properties of Hikvision in various jurisdictions. Other trademarks and logos mentioned below are the properties of their respective owners.

Legal Disclaimer

TO THE MAXIMUM EXTENT PERMITTED BY APPLICABLE LAW, THE PRODUCT DESCRIBED, WITH ITS HARDWARE, SOFTWARE AND FIRMWARE, IS PROVIDED "AS IS", WITH ALL FAULTS AND ERRORS, AND SECURICO CCTV MAKES NO WARRANTIES, EXPRESS OR IMPLIED, INCLUDING WITHOUT LIMITATION, MERCHANTABILITY, SATISFACTORY QUALITY, FITNESS FOR A PARTICULAR PURPOSE, AND NON-INFRINGEMENT OF THIRD PARTY. IN NO EVENT WILL SECURICO, ITS DIRECTORS, OFFICERS, EMPLOYEES, OR AGENTS BE LIABLE TO YOU FOR ANY SPECIAL, CONSEQUENTIAL, INCIDENTAL, OR INDIRECT DAMAGES, INCLUDING, AMONG OTHERS, DAMAGES FOR LOSS OF BUSINESS PROFITS, BUSINESS INTERRUPTION, OR LOSS OF DATA OR DOCUMENTATION, IN CONNECTION WITH THE USE OF THIS PRODUCT, EVEN IF SECURICO HAS BEEN ADVISED OF THE POSSIBILITY OF SUCH DAMAGES. REGARDING TO THE PRODUCT WITH INTERNET ACCESS, THE USE OF PRODUCT SHALL BE WHOLLY AT YOUR OWN RISKS. SECURICO SHALL NOT TAKE ANY RESPONSIBILITIES FOR ABNORMAL OPERATION, PRIVACY LEAKAGE OR OTHER DAMAGES RESULTING FROM CYBER ATTACK, HACKER ATTACK, VIRUS INSPECTION, OR OTHER INTERNET SECURITY RISKS; HOWEVER, SECURICO WILL PROVIDE TIMELY TECHNICAL SUPPORT IF REQUIRED.

SURVEILLANCE LAWS VARY BY JURISDICTION. PLEASE CHECK ALL RELEVANT LAWS IN YOUR JURISDICTION BEFORE USING THIS PRODUCT IN ORDER TO ENSURE THAT YOUR USE CONFORMS TO THE APPLICABLE LAW. SECURICO SHALL NOT BE LIABLE IN THE EVENT THAT THIS PRODUCT IS USED WITH ILLEGITIMATE PURPOSES.

IN THE EVENT OF ANY CONFLICTS BETWEEN THIS MANUAL AND THE APPLICABLE LAW, THE LATER PREVAILS.

Adjust the Time on Hikvision DVR / NVR

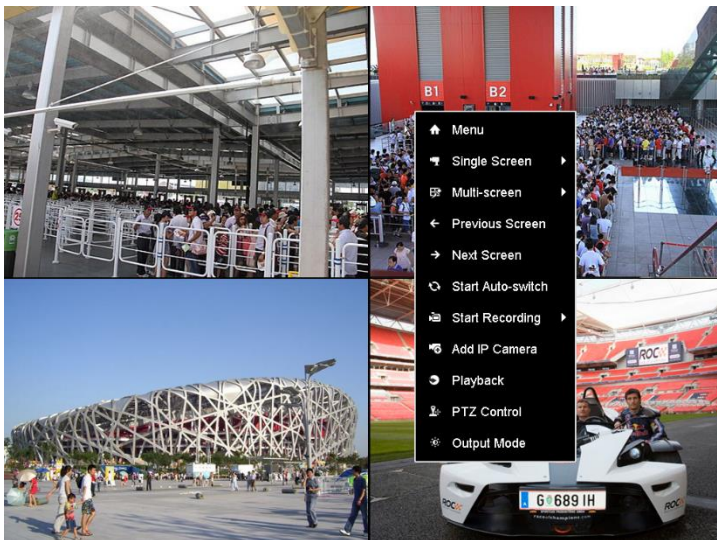
There are a couple of different ways to change the time on your CCTV. This manual covers the easiest method.

If you do not already have a computer monitor or TV connected to the recorder box, and a mouse also connected, you will need to connect both, in order to complete this task.

Follow the steps below based on the menu version you have; the screenshots will help you determine which menu your system has

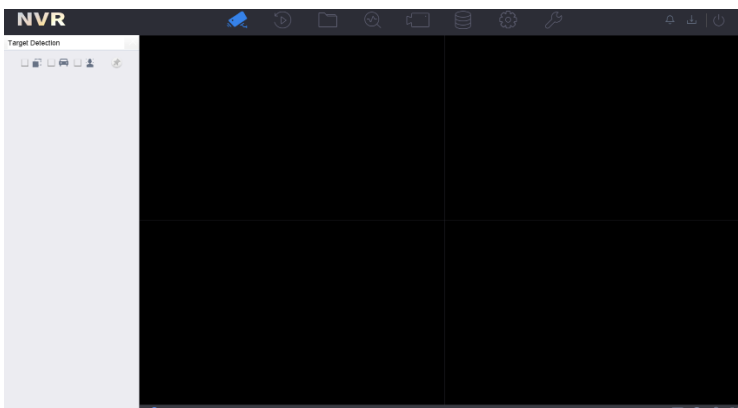
Old Menu

The old menu system looks like the below, when you right-click on the mouse.



New Menu

The new menu system looks like the below (menu options are along the top of the screen).



Adjust the Time on Hikvision DVR / NVR

Change the Time Using the Old Menu

1. Right-click on the mouse
2. Click on **Main Menu**
3. (Input your unlock pattern / username & password)
4. Go to **Configuration**
5. From the top menu, select **DST Settings**
6. Tick the box for **Auto DST Adjustment** and then click **Apply**
7. From the left menu, click on **Network**
8. Now from the top menu, select **NTP**
9. Input the following:

*Enable NTP: **Ticked***

*Interval (Min): **60***

*NTP Server: **pool.ntp.org***

*NTP Port: **123***

10. Then click **Apply** at the bottom of the screen.
11. The time should now be showing correct, and will automatically adjust in the autumn and spring.
12. If you do not see the updated time, click **Back** to exit the menus and then open the **Main Menu** again, and click **Configuration**. You should now see the updated time.

Adjust the Time on Hikvision DVR / NVR

Change the Time using the New Menu

1. From the menu at the top of the screen click on **System Management**
2. In here tick the box for **Enable DST** and also tick **Auto** for DST Mode
3. Once this is done click **Apply**
4. On the left click on **Network**
5. Then **Basic Settings**
6. Now click on **NTP** from the top menu
7. Enter the following:

*Enable: **Ticked***

*Interval (min): **60***

*NTP Server: **pool.ntp.org***

*NTP Port: **123***

8. Then click **Apply** at the bottom
9. The time should now be showing correct and will automatically adjust in autumn and spring.